

1 **UNITED KINGDOM CONFORMITY ASSESSMENT**

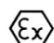
UK TYPE EXAMINATION CERTIFICATE

2 **Product or Protective System Intended for use in Potentially Explosive Atmospheres**
SI 2016:1107 (as amended) – Schedule 3A, Part 1

- 3 Type Examination Certificate No.: **EMA21UKEX0031X**
- 4 Product: **Motion sensor type KITAS2171**
- 5 Manufacturer: **Continental Automotive GmbH**
- 6 Address: **Heinrich Hertz Straße 45, 78052 Villingen-Schwenningen, Germany**
- 7 This product and any acceptable variation thereto is specified in the schedule to this certificate and the documents therein referred to.
- 8 Element Materials Technology, Approved Body number 0891, in accordance with Regulation 42 of the Equipment and Protective Systems Intended for Use in Potentially Explosive Atmospheres Regulations 2016, SI 2016:1107 (as amended), certifies that this product has been found to comply with the Essential Health and Safety Requirements relating to the design and construction of products intended for use in potentially explosive atmospheres given in Schedule 1 of the Regulations.
The examination and test results are recorded in the confidential report **21 203 294743**.
- 9 Compliance with the Essential Health and Safety Requirements has been assured by compliance with:
EN IEC 60079-0:2018 EN 60079-11:2012

Except in respect of those requirements listed at section 18 of the schedule.

- 10 If the sign "X" is placed after the certificate number, it indicates that the product is subject to specific conditions of use specified in the schedule to this certificate.
- 11 This TYPE EXAMINATION CERTIFICATE relates only to the design and construction of the specified product. Further requirements of the Regulations apply to the manufacturing process and supply of this product. These are not covered by this certificate.
- 12 The marking of this product shall include the following:

 **II 2 G Ex ib IIC T4 Gb**

This certificate and its schedules may only be reproduced in its entirety and without change. This certificate is issued in accordance with the Element Materials Technology Ex Certification Scheme.

S.P. Winsor

S P Winsor, Certification Manager

Issue date: 2022-03-15

Page 1 of 5

CSF341 4.0

13 SCHEDULE TO UK TYPE EXAMINATION CERTIFICATE

14 CERTIFICATE NUMBER EMA21UKEX0031X

15 Description of Product

The motion sensor type KITAS2171 is used together with an EC control unit type DTCO1381 or type MTCO 1324 to monitor vehicles transporting flammable liquids. The motion sensor type KITAS2171 is installed on the transmission unit of the vehicle and supplies the EC control unit with motion pulses. The explosion protection of the motion sensor type KITAS2171 is given when the vehicle stands still.

Type keys:

KITAS2171.0x xx xx 01 (sensor element Hall IC, fully potted)

KITAS2171.20 xx xx 01 (sensor element Hall IC, partially potted, electronic solution)

Technical data:

Supply and signal circuits
(Connections on the plug connector)

In type of protection intrinsic safety Ex ib IIC.
Only for the connection to the intrinsically safe circuits of the tachograph type DTCO1381 or MTCO1324 according to the EU type examination certificate TÜV 03 ATEX 2324 X and TÜV 02 ATEX 1850 X.
A cable length of 20 m is permissible for the interconnection.

Permissible ambient temperature range:
For 2171.20 xx: $-30\text{ °C} \leq T_a \leq +120\text{ °C}$
For 2171.0x: $-30\text{ °C} \leq T_a \leq +105\text{ °C}$

16 Test report No. (associated with this certificate issue): 21 203 294743.

17 Specific Conditions of Use

The motion sensor type KITAS2171 is a small piece of equipment which cannot be labelled with all information according to EN IEC 60079-0:2018, EN 60079-11:2012 and Directive 2014/34/EU. Therefore, all relevant data is given in the operating and installation instructions.



Attention is drawn to the operating and installation instructions which may contain useful information in relation to conditions of use.

18 Essential Health and Safety Requirements (Regulations Schedule 1)

In addition to the Essential Health and Safety Requirements covered by the standards listed at item 9, all other requirements are demonstrated in the relevant test reports.

19 Drawings and Documents

The list of controlled technical documentation is given in Appendix A to this schedule.

20 Routine Tests

None.

21 Specific Conditions for Manufacture

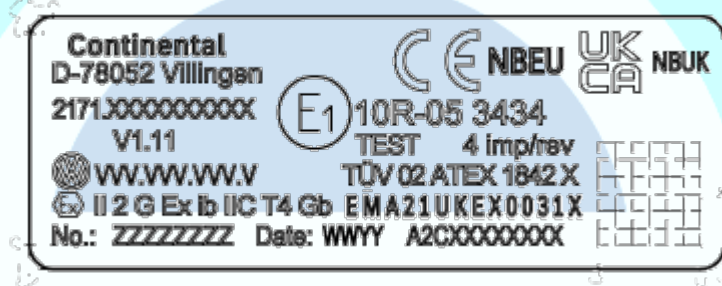
None.

**SCHEDULE TO UK TYPE EXAMINATION CERTIFICATE
CERTIFICATE NUMBER EMA21UKEX0031X**

22 Photographs



23 Details of Markings



24 Certificate History

Original certificate 2022-03-15 First issue.

This certificate is a consolidated certificate and reflects the latest status of the certification, including all variations and amendments.

25 Notes to UKCA marking

In respect of UKCA Marking, Element Materials Technology accepts no responsibility for the compliance of the product against all applicable Regulations in all applications.

26 Notes to this certificate

Element Materials Technology certification reference: TUNQ-054818-00 i3 (GU-TUNQ-0018).

Throughout this certificate, the date format yyyy-mm-dd (year-month-day) is used.

Approved Body 0891 is the designation for Element Materials Technology Warwick Ltd.

SCHEDULE TO UK TYPE EXAMINATION CERTIFICATE
CERTIFICATE NUMBER EMA21UKEX0031X

27 Conditions for the validity of this certificate

This certificate remains valid for so long as:

- (i) The equipment listed in section 4 is manufactured in accordance with the documents listed in Appendix A of this certificate.
- (ii) The standards listed in section 9 of this certificate continue to satisfy the Essential Health and Safety Requirements of Schedule 1 of the Regulations SI 2016:1107 (as amended by SI 2019:696) and the generally acknowledged state of the art (e.g. as determined by the publishers of those standards).



SCHEDULE TO UK TYPE EXAMINATION CERTIFICATE
CERTIFICATE NUMBER EMA21UKEX0031X

APPENDIX A - TECHNICAL DOCUMENTS

Title:	Drawing No.:	Rev. Level:	Date:
Element list of scheduled drawings for this certificate	Scheduled drawings list for EMA21UKEX0031X	1	2022-03-15

